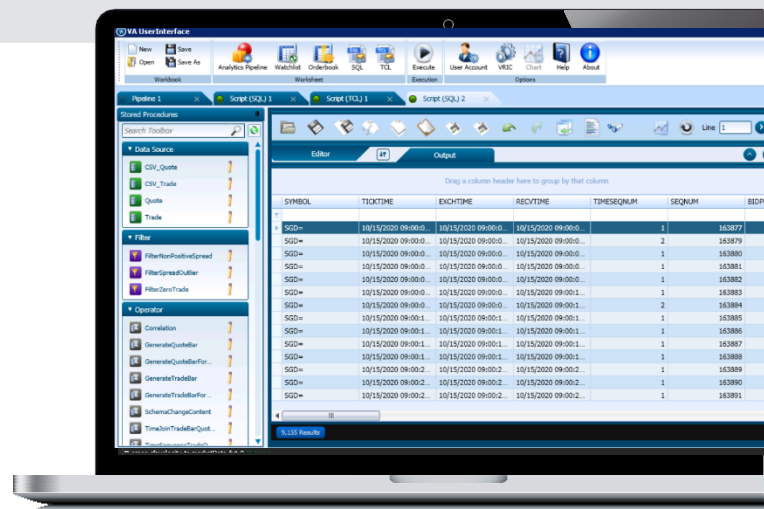


Management & Support of Data Analytics

- URSUTECH manage deployment, operations and support Data Analytics clients on the behalf of Refinitiv.
- This global responsibility, which includes the licensing, upgrades and governance of Data Analytics, is encompassed in a comprehensive managed service approach.

Environment

- Red Hat Linux
- Windows Server



Why is DA complex?

- Data Analytics is a bespoke system containing a large number of market data
- Lack of development support requires ingenuity from URSUTECH
- Maintaining such a large amount of data requires efficiency, expertise and time
- Support knowledge is hard to come by for a legacy system

What is the value?

- 24x7 support; resolving all client queries and maintaining the system flawlessly
- 10+ years experience in historical data management
- URSUTECH understand the complexities of building and maintaining historical data gathering infrastructure
- Vast pool of knowledge of common issues/solutions and performance figures

Challenges

- Kx Technology - KDB+ Engineering
- Complex Architecture - **100+** processes per server
- High-performance Analytics platform that combines TR Financial and Risk content
- High degree of complexity
- Global monitoring 24x7x365



Technical Highlights

- Agile Team Management for product evaluation and engineering support
- Day-to-day application maintenance of production and UAT systems
- Creation of custom ITRS Netprobes & monitoring for DA system
- Monitoring Applications (ITRS, automated emails, chats)
- Start of Day and End of Day checks (manual + automation)
- Trouble shooting issues on highly complex systems
- Day-to-day issue identification/troubleshooting, issue resolutions and escalations
- “q” programming & query language for kdb+ database array analysis
- In-house developed Python Scripting for FTP file upload/download automation
- Tick database population for real-time and historical data using TR Elektron Data Platform, giving the client the ability to query kdb+ database for real-time, historical and time-series data
- Client Execution/Orders ftp file download, validation, ftp file upload
- Management of analytical data for Quarterly MiFID report generation and submission to client to meet client regulatory reporting requirements
- Use of ‘q’ query language to interrogate kdb+ database
- Exchange Map management
- Support of columnar database ‘kdb+’
- Database Management and Database support of kdb+ database populated with client data
- Monitoring of system/processes for performance and stability
- Support Runbook and documentation creation
- Software updates/upgrades

For further information contact:

Surendra Kumar
surendra@ursutech.com
www.ursutech.com

John Toppo
john@ursutech.com

Nilesh Jani
nilesh@ursutech.com

REFINITIV™
DATA IS JUST
THE BEGINNING

